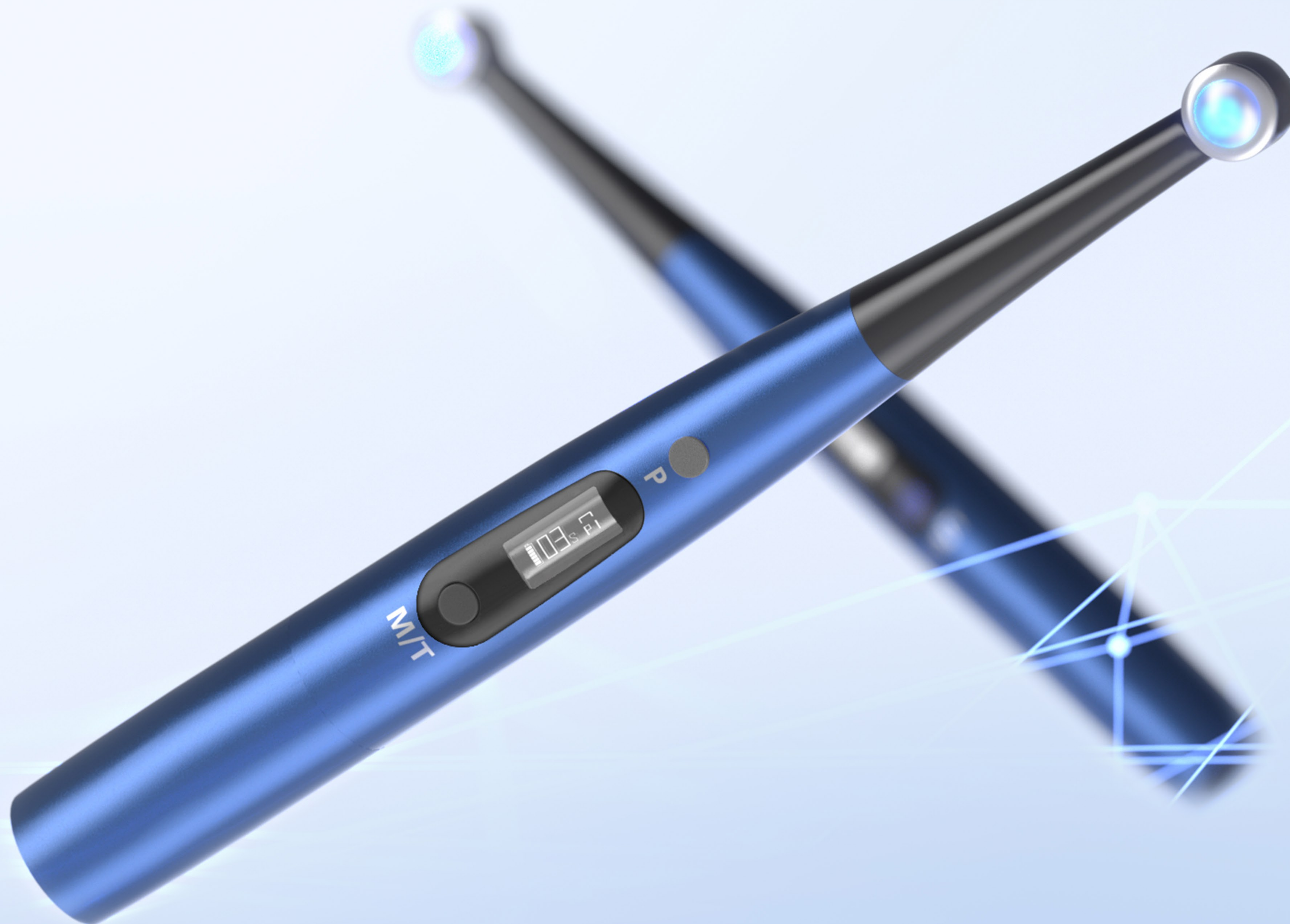


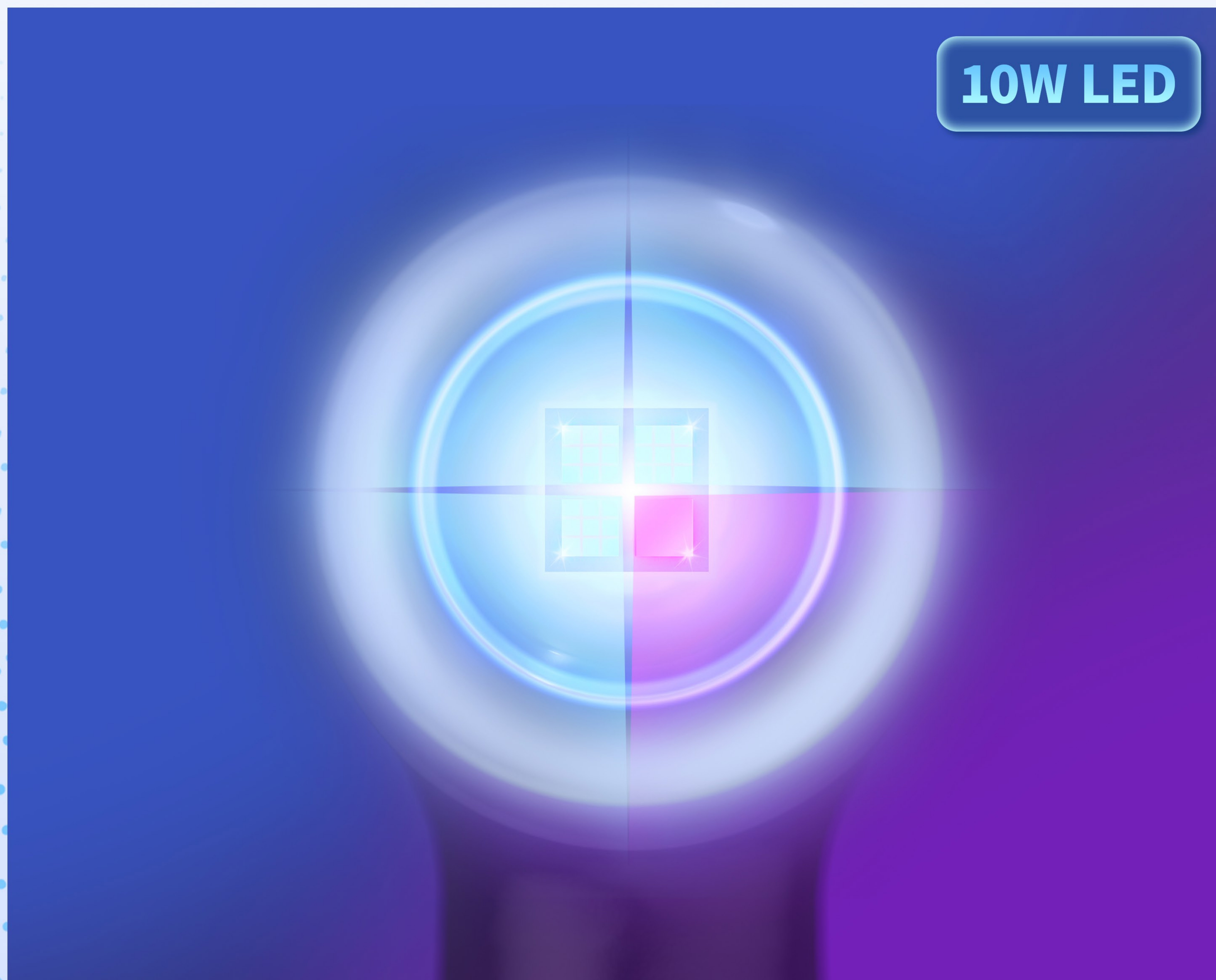


DV-50 **LED CURING LIGHT**



10W LED imported from the USA with a 10 mm diameter lens

The collimated light beam ensures concentrated energy output with stronger penetration.



The light source has an optical effective area of 75 mm^2 , a 10mm diameter, and a 10 mm depth.

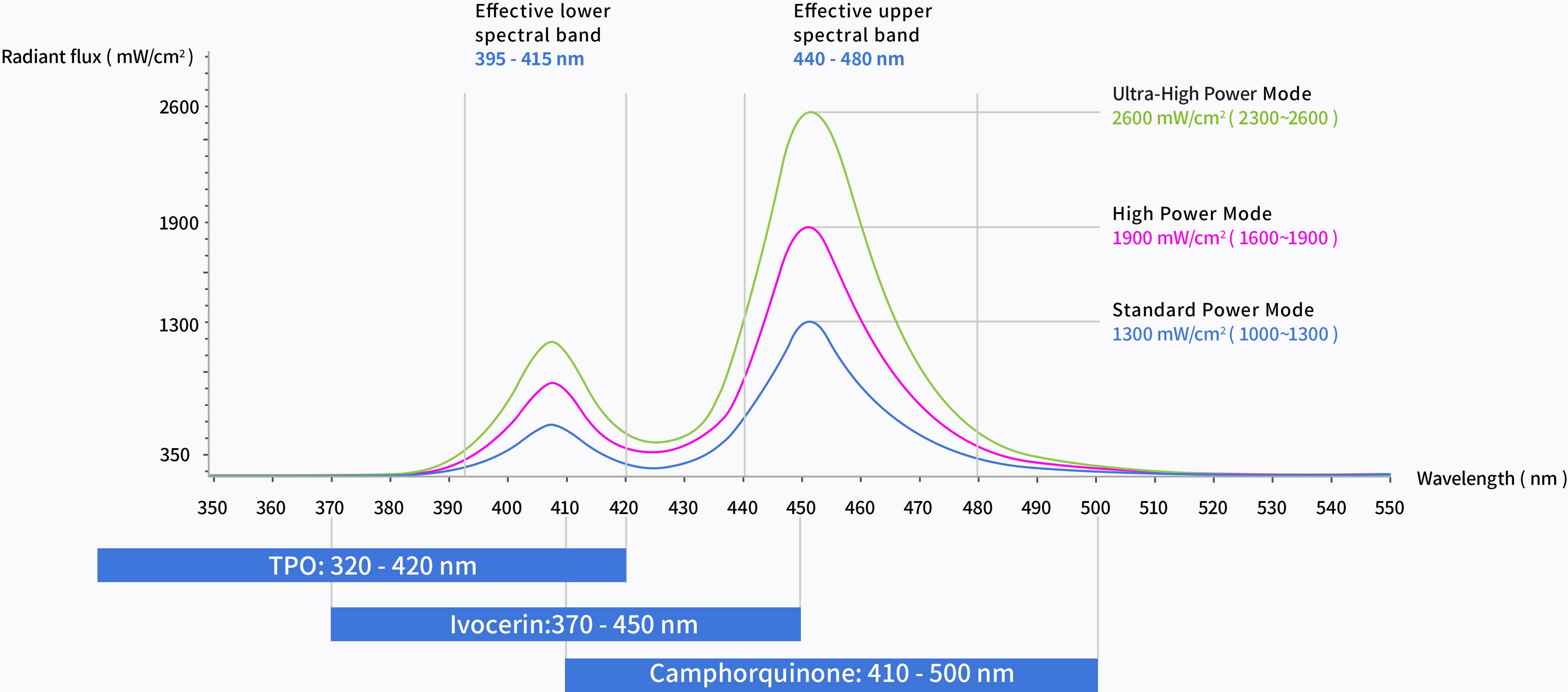


The 10mm lens diameter provides a broader illumination range, covering larger restorations at once.



Broad Spectrum Curing Compatible with Various Resin Materials

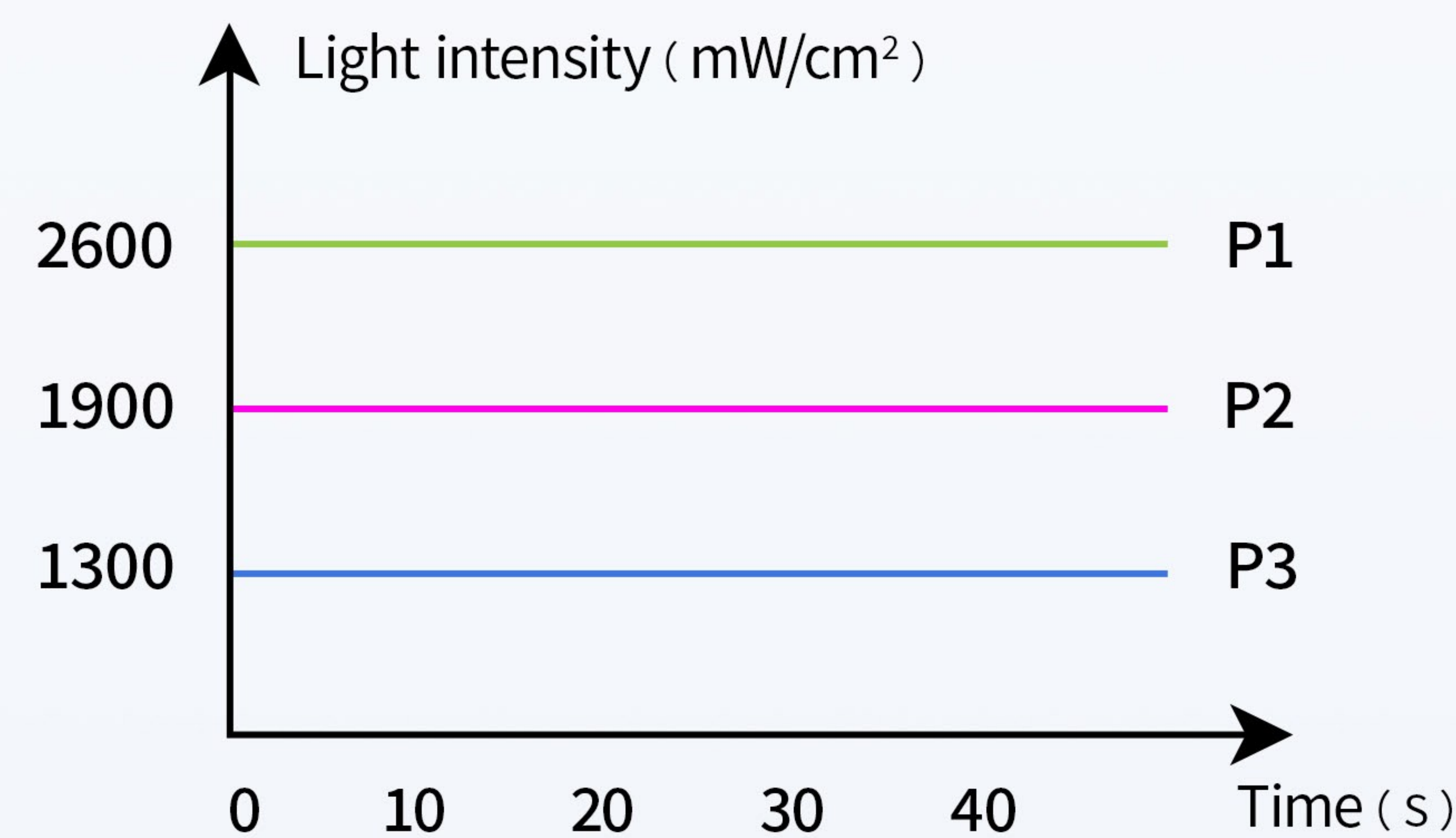
The spectrum range of **385 nm - 515 nm** includes photo-initiators such camphorquinone (**CQ**), acylphosphine oxide (**TPO**), and phenylpropanedione (**PPD**), allowing curing for most resins on the market.



Nine Light Intensity Combinations for Multipurpose Applications

Full adaptability for diverse clinical needs

Full Power Mode



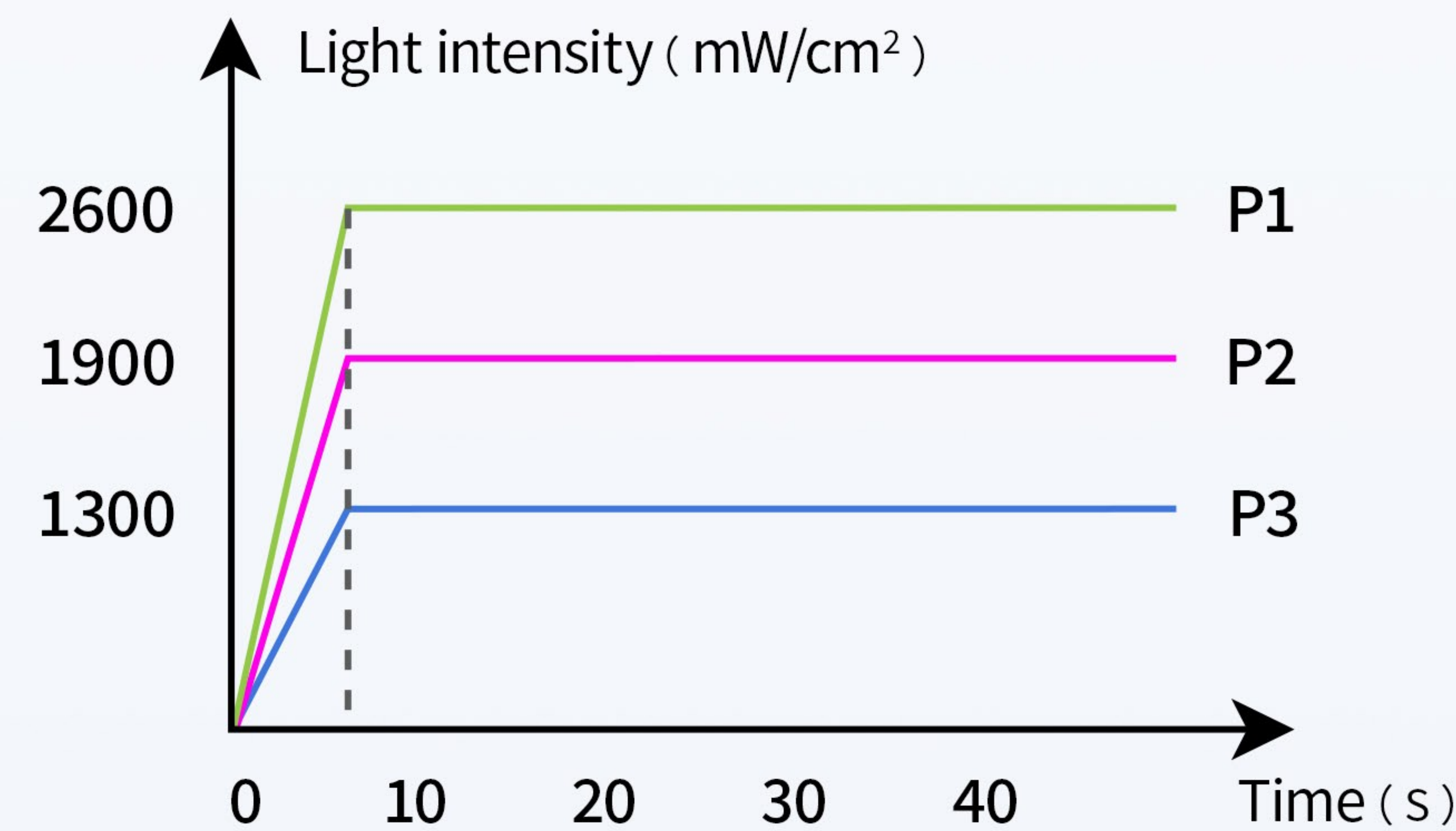
Full Power Mode

Continuous full-power output for rapid curing of composite resins.

P1 (Ultra-High Power)

Ultra-High Power: 2300 - 2600 mW/cm²
Wavelength: 385 nm ~ 515 nm
Duration: 1s/2s/3s

Progressive Mode



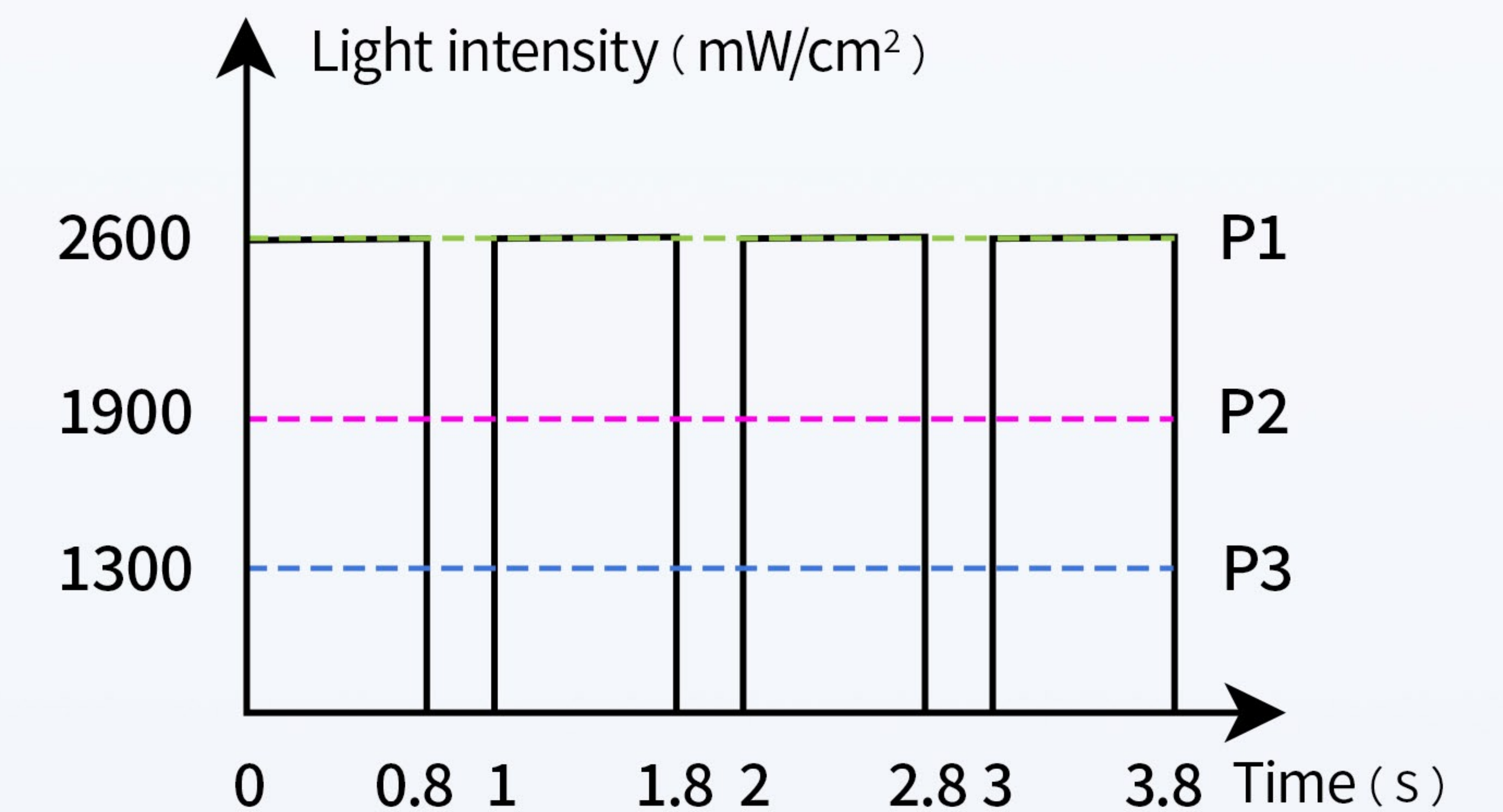
Progressive Mode

Gradual intensity increase reduces resin shrinkage, minimizing microleakage and ensuring dense filling.

P2 (High Power)

High Power: 1600 - 1900 mW/cm²
Wavelength: 385 nm ~ 515 nm
Duration: 1s/2s/3s/4s/5s/10s/15s/20s

Pulse Mode



Pulse Mode

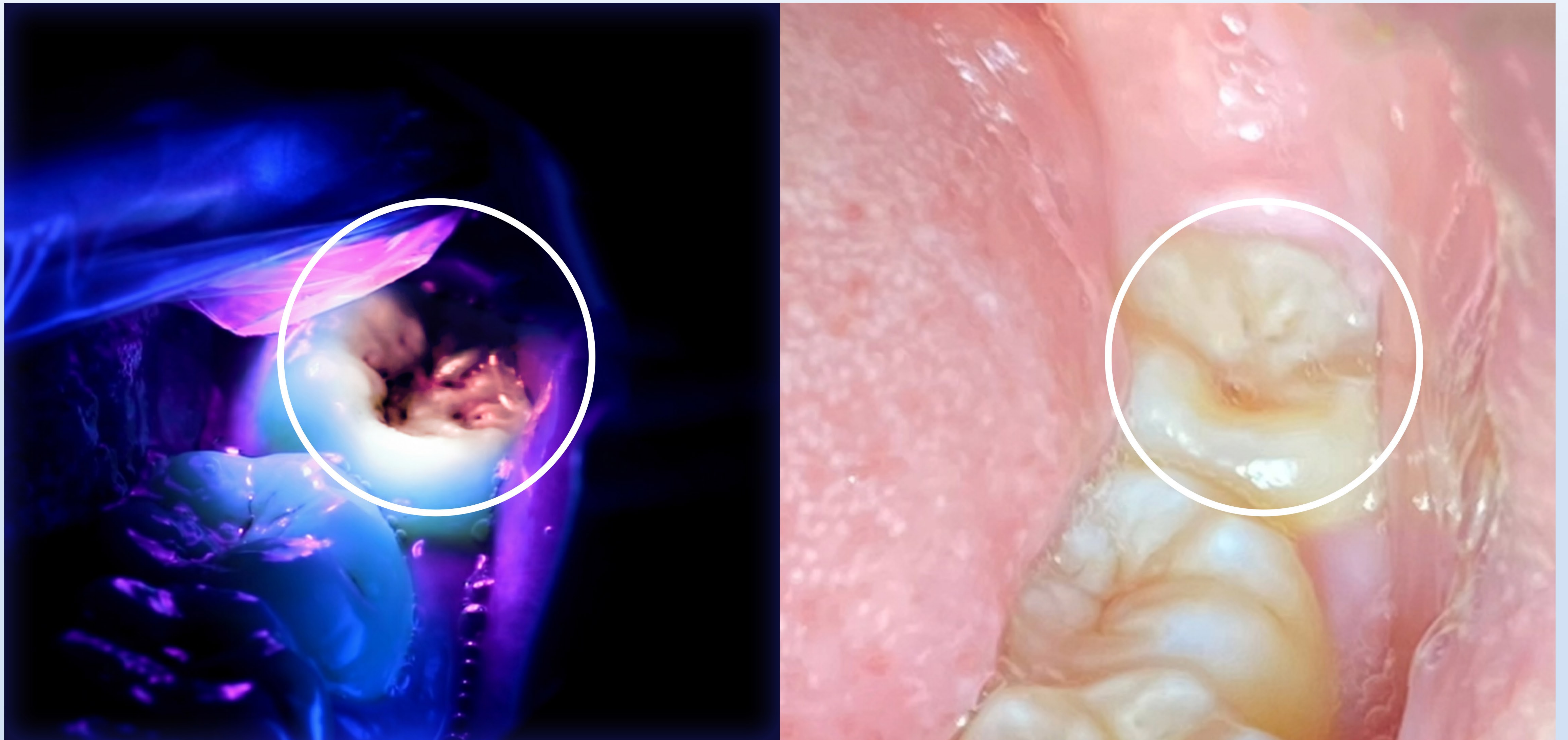
Alternating 0.8 s illumination and 0.2 s pause cycles reduce heat generation during treatment.

P3 (Standard Power)

Standard Power: 1000 - 1300 mW/cm²
Wavelength: 385 nm ~ 515 nm
Duration: 1s/2s/3s/4s/5s/10s/15s/20s/25s/30s/35s/40s

Caries Detection with Precision

In caries detection mode, without changing the handpiece, the device emits red fluorescence when illuminating decayed areas, facilitating thorough decay removal.



2 kinds of Mangnetic Fiber-optic Lens

To meet different clinical applications

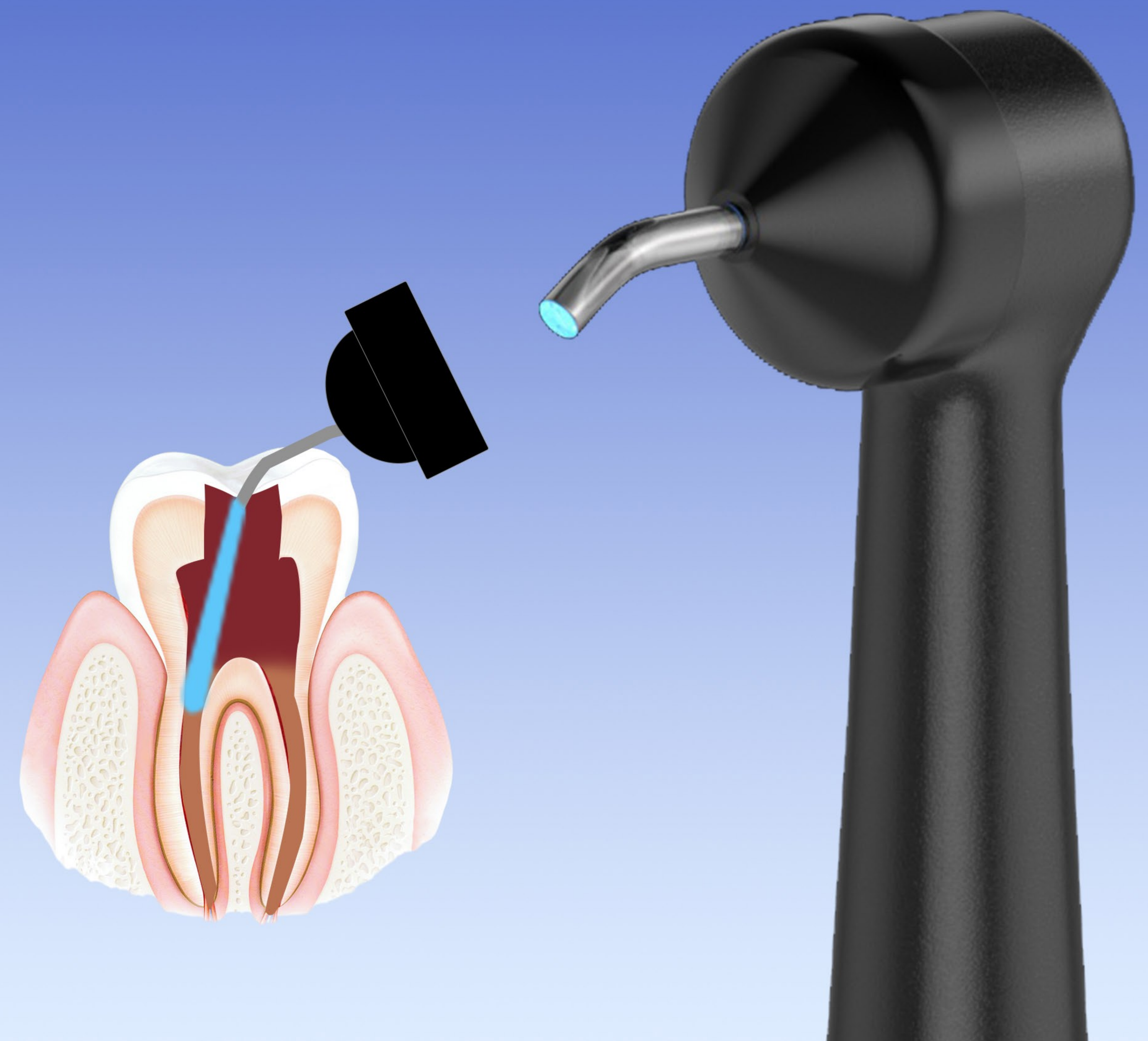
Spherical Curing Lens

For small composites and is helpful for building convexproximal contacts



Endo Guide Lens

For the preparation of rootapex and other stenosis



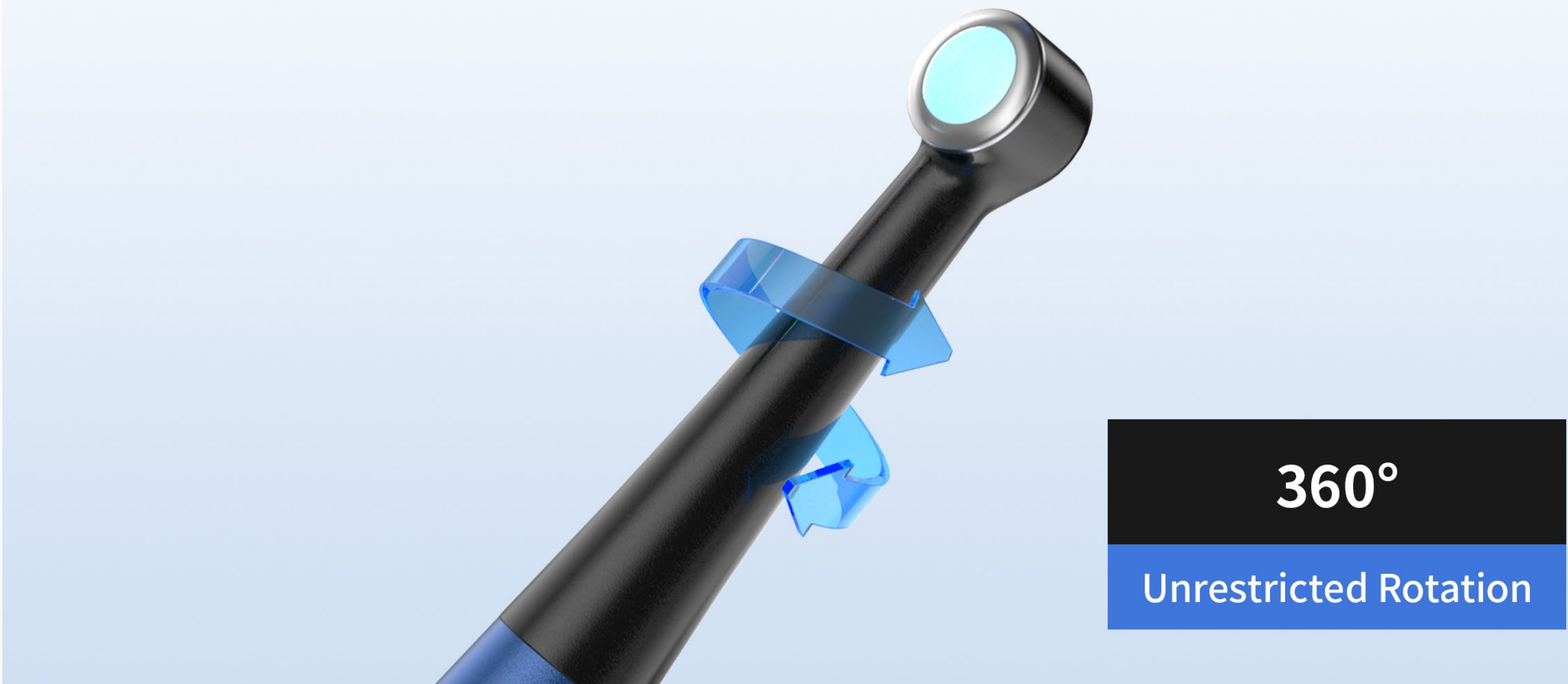
Automatic Memory for Instant Readiness

The device remembers the last used mode and retrieves it upon start up, enhancing treatment efficiency.



360° Rotatable Head for Flexible Illumination

The rotatable head ensures full illumination of intraoral angles. Its slim design allows comfortable treatment even for patients with limited mouth opening.



OLED Display for Clear Information

The OLED screen on the device body displays mode, duration, and battery life clearly. A fully charged device supports over 500 uses (2000 mAh battery, based on P2 mode with 10s intervals).



Base with Light Intensity Measurement for Quality Assurance

The charging base measures light intensity to ensure accurate resin curing results.





Manufacturer Name: Guilin Veirun Medical Technology Co., Ltd.

Address: No.D-07 Information Industry District, High-Tech Zone,
541004 Guilin, Guangxi, PEOPLE'S REPUBLIC OF CHINA

Tel: +86(773)5880619

Tel: +86(773)2260566

Fax: +86(773)2260519

Web: www.veirun.com

E-mail: info@veirun.com

Scan to visit VRN
official website



VEIRUN.COM