

BETTER VISION

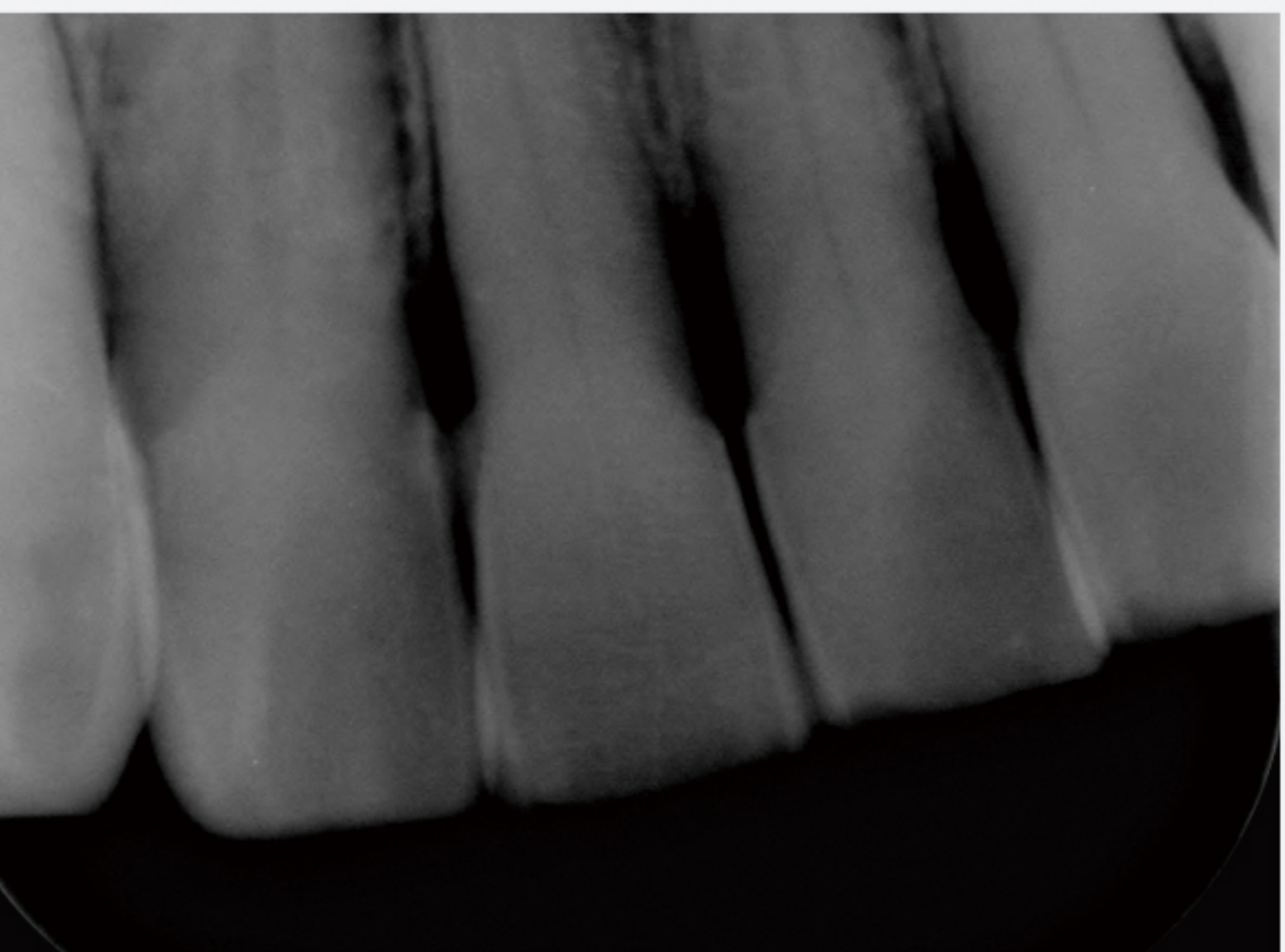
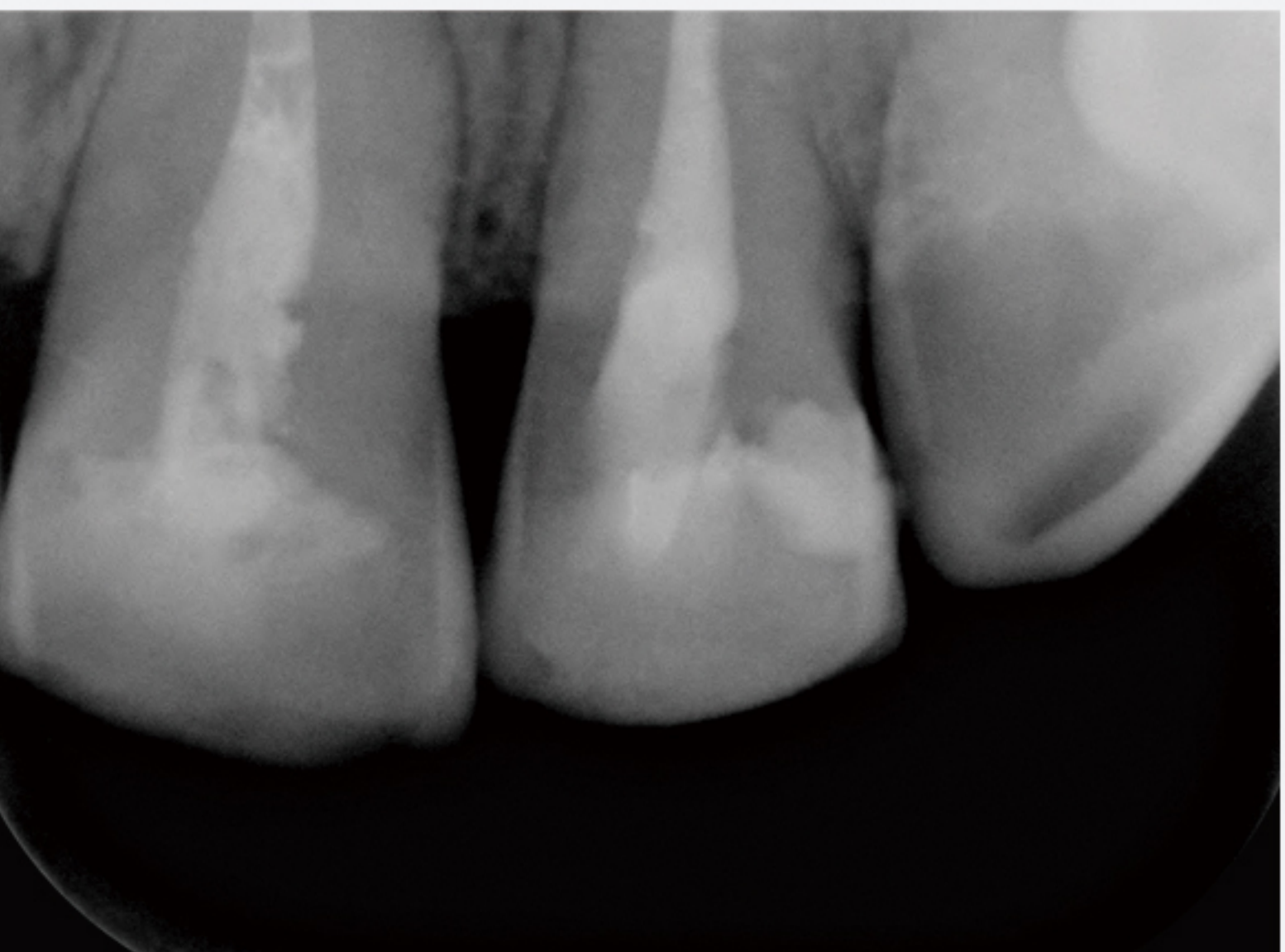
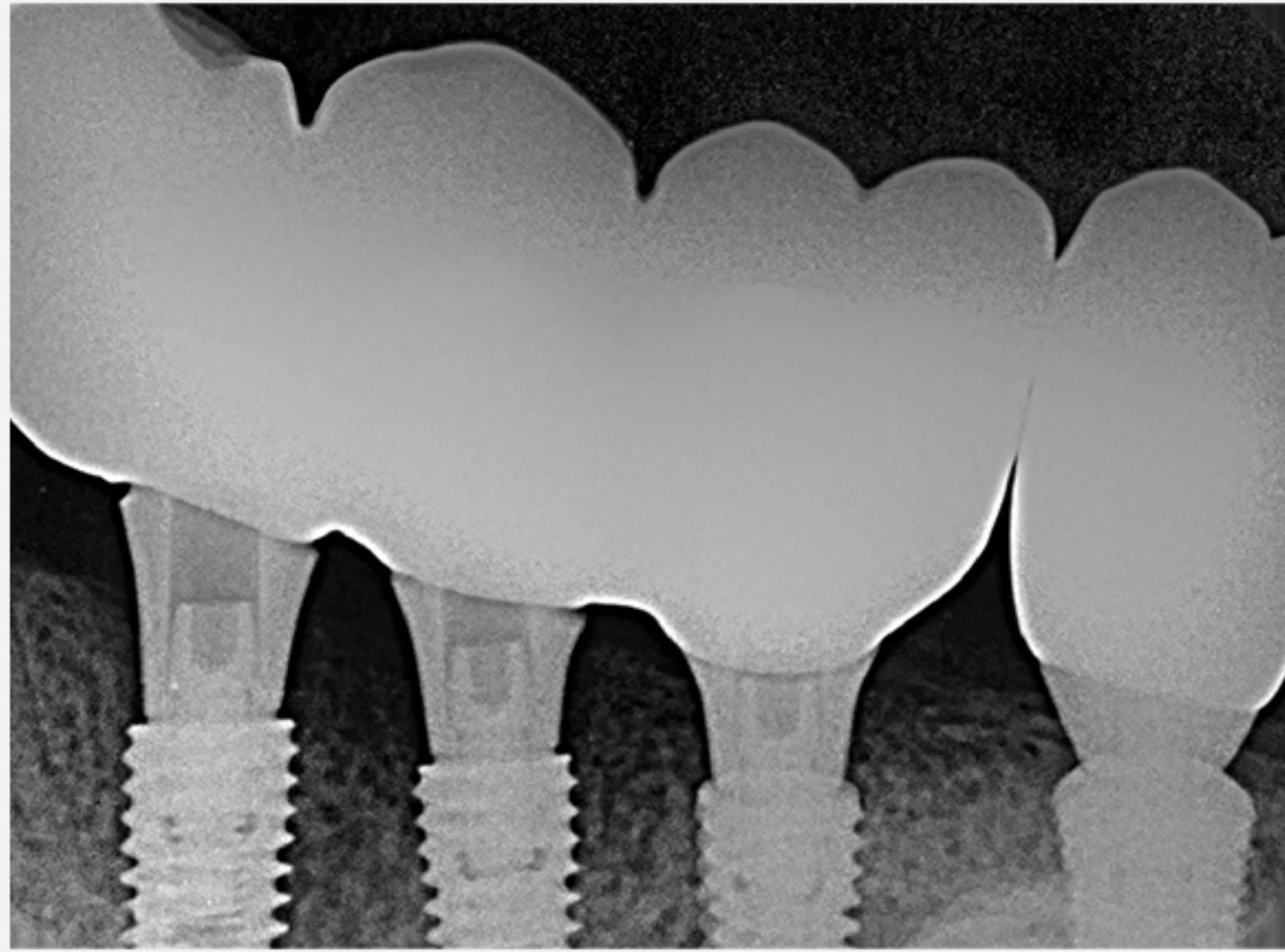
Dental Imaging System



High-Definition
Imaging

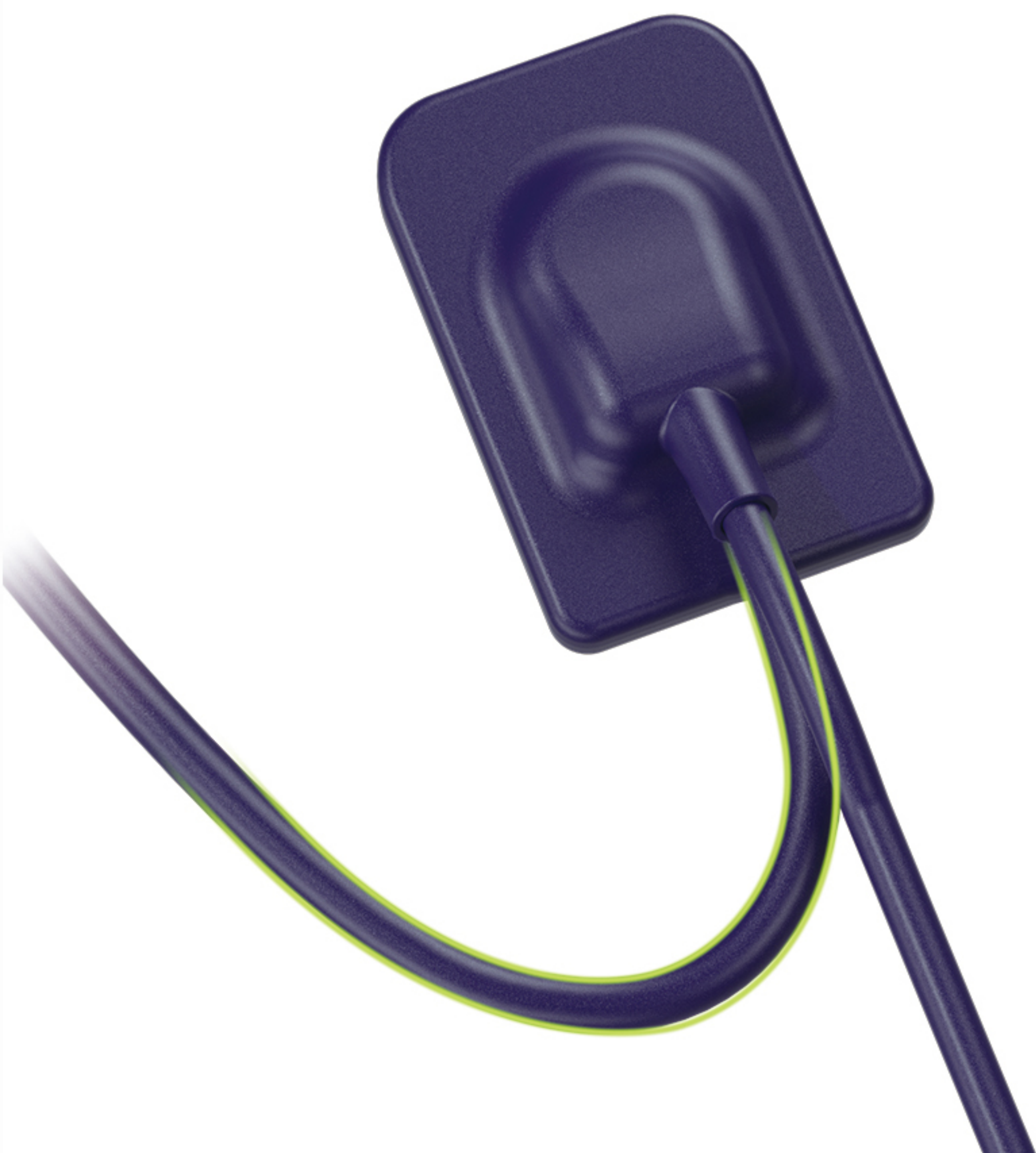


APS CMOS
Sensor



Why Choose Intraoral X-Ray Sensor ?

- Active Pixel Sensor (APS) CMOS technology.
- Intelligent connectivity solution, ensuring compatibility with a wide range of X-ray machines.
- Direct evaporation deposition scintillator process for ultra-high sensitivity.
- Direct connection via USB 2.0 interface.
- Ergonomic design featuring a slim profile, smooth chamfers, and thumb-friendly positioning.
- Digital Time Delay Integration (TDI) mode for enhanced performance.
- IP68 protection rating, ensuring robustness and longevity.



Super Toughness

Tens of thousands of tests have been carried out according to the actual use, and the product has super toughness and durability.

Technical Specification

■ Size 1



Mechanical dimensions
25.03 x 38.53 x 4.5

Effective imaging area
20 x 30

Pixel matrix
(1.5M) 1000 x 1500

■ Size 1.5



Mechanical dimensions
29.2 x 43.5 x 4.5

Effective imaging area
24 x 33

Pixel matrix
(1.89M) 1200 x 1650

■ Size 2



Mechanical dimensions
31.62 x 45.0 x 4.5

Effective imaging area
26 x 36

Pixel matrix
(2.34M) 1300 x 1800



Detector type : APS CMOS

Spatial resolution : 25 lp/mm

Cintillator : Csl

Grayscale : 16-bits, level 65535

Line length : Standard 3m

Protection level : IP68 for Soak disinfection

Pixel size : 20 μm

Operation system : Windows 7 and above, 32/64 bit