



**DS-100**

**Dental Bone Surgery**





# High-Efficiency Cutting Precise Performance

- Cutting width: 10 mm

10 mm

- Thickness: 3 mm (dental bone/cattle femur bone)

3 mm

- Time required: 19.6 seconds

19.6 s



## Minimally Invasive Cutting with Precision Positioning

Working tip vibration amplitude of **20-200  $\mu\text{m}$**  ensures uniform and stable contact with bone tissue, eliminating vibrations and providing smoother cutting. Suitable for various surgical scenarios

## Six Applications of Ultrasonic Osteotome Machine

- Alveolar Surgery
- Implant Surgery
- Periodontal Surgery
- Root Canal Surgery
- Orthodontic Surgery
- Maxillofacial Surgery



## Bone Cutting Mode

Ideal for minimally invasive tooth extraction, wisdom tooth removal, root tip extraction, implant removal, lateral window surgery, bone grafting, cyst removal, sinus lift, autogenous bone harvesting, alveolar ridge splitting, and orthodontic PAOO procedures.



## Endodontic Mode

Used for root-end cavity preparation and root-end debridement.



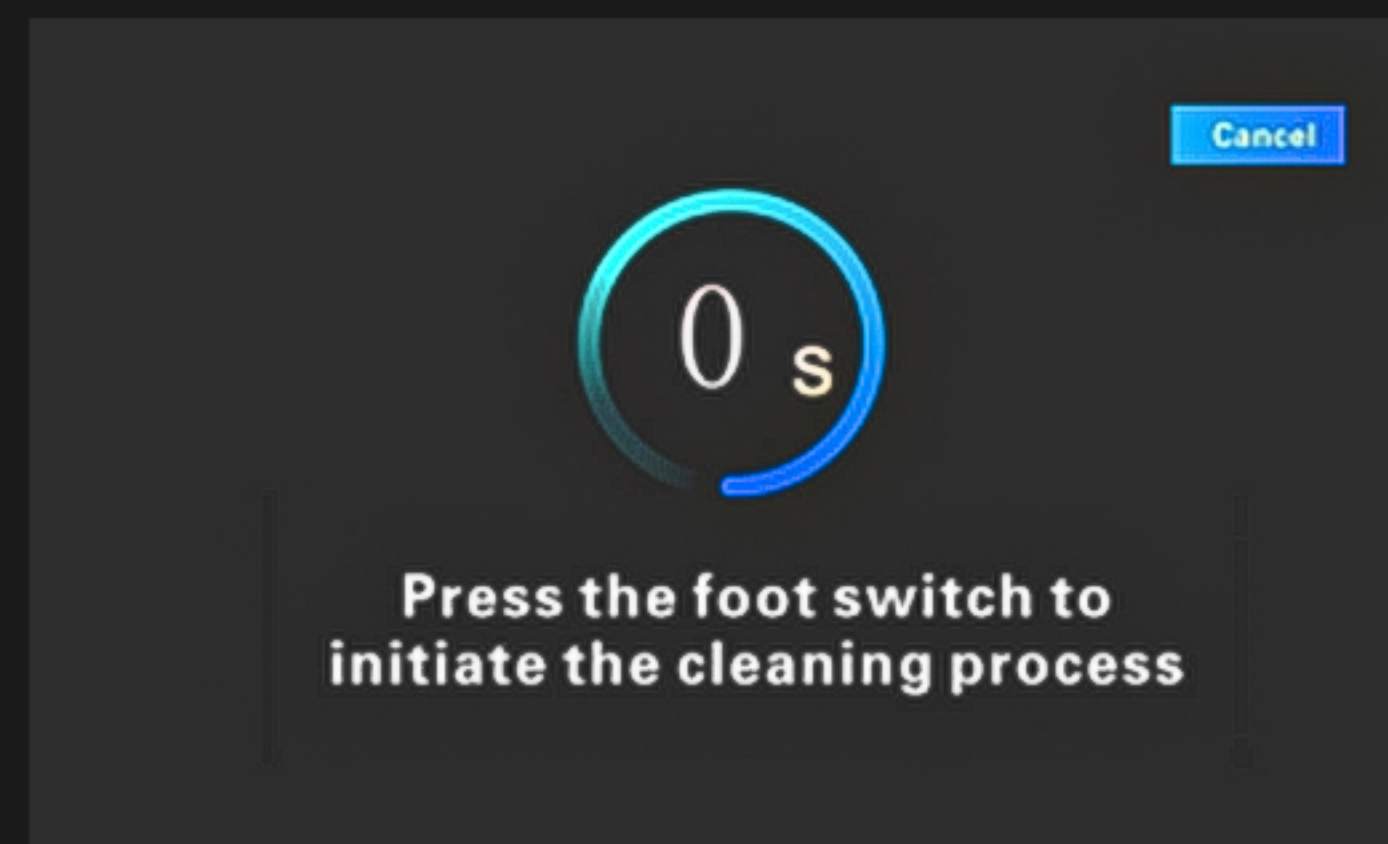
## Periodontal Mode

Suitable for root surface leveling, crown lengthening, and precise osteoplasty.



## Cleaning Mode

Enables simple and convenient cleaning of water pipelines.





# Micron-Level Vibration Precision

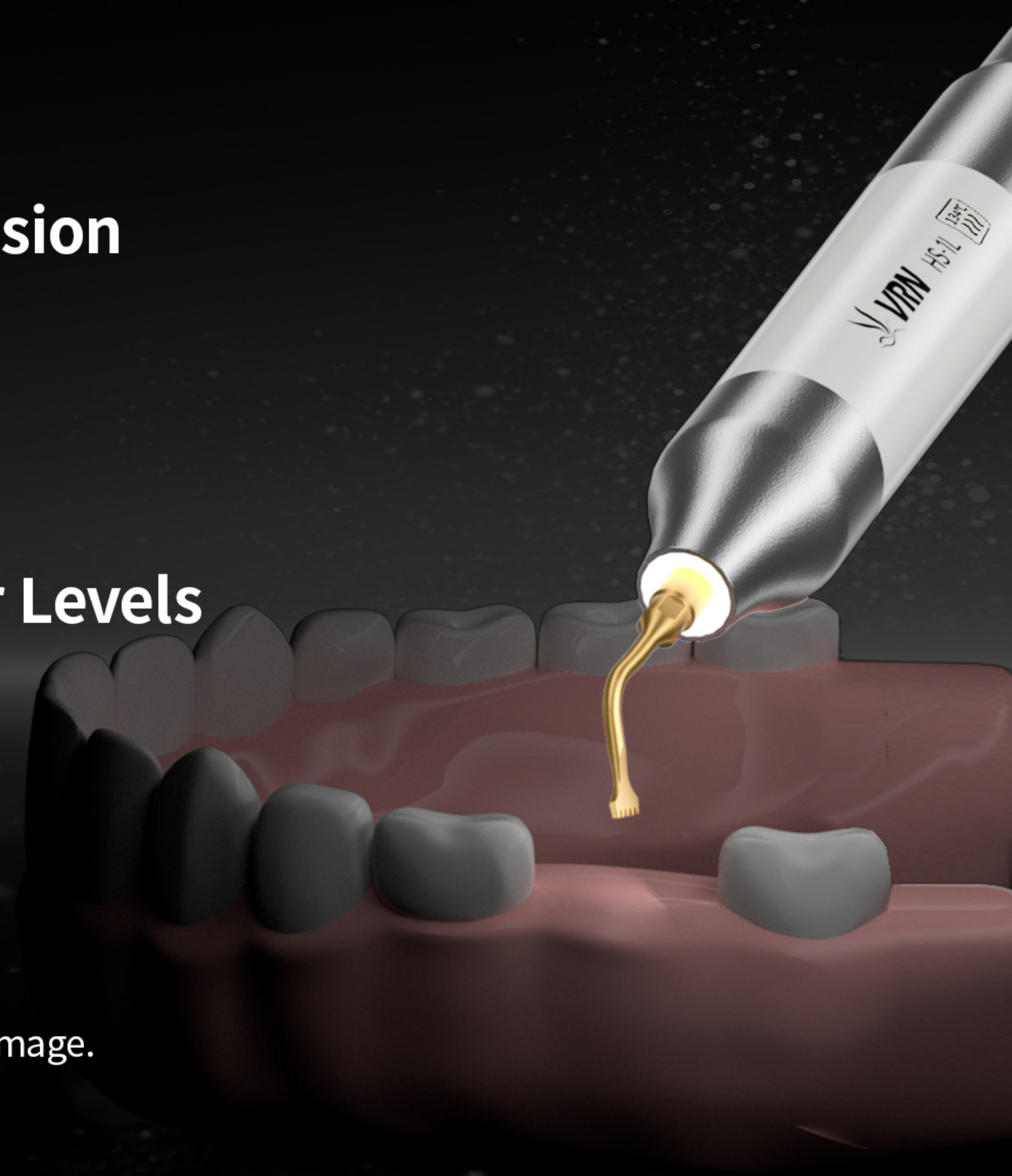
Enables effortless cutting with minimal force.

# Adjustable Power and Water Levels

**12 settings** for precise surgical treatments.

# Smallest Incision Size

As small as **3.5mm × 0.5mm**, reducing tissue damage.



# Selective Cutting Frequency

Operating at **22kHz–29.6kHz**, it effectively cuts bone tissue while minimizing the risk of damage to nerves, blood vessels, and other soft tissues.

## Minimal Amplitude



Radial amplitude:  $<200\mu\text{m}$



Radial amplitude:  $<200\mu\text{m}$



# High-Performance Handpiece with LED Illumination

## Durable and Light weight

Built to last with high-strength materials.

## Powerful LED Illumination

**1,000 LX** brightness for enhanced surgical visibility.



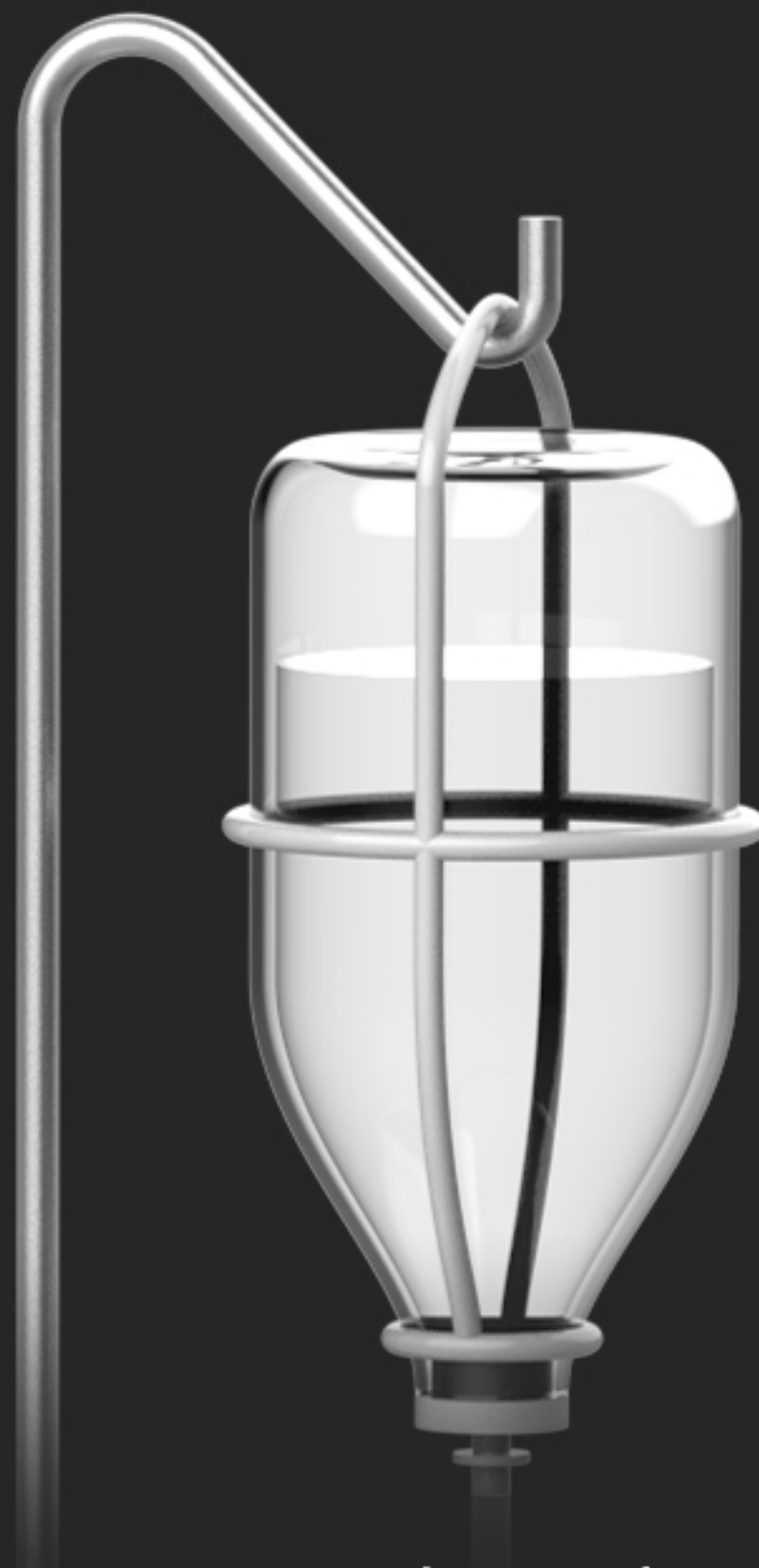


# Separate Water Tube Design

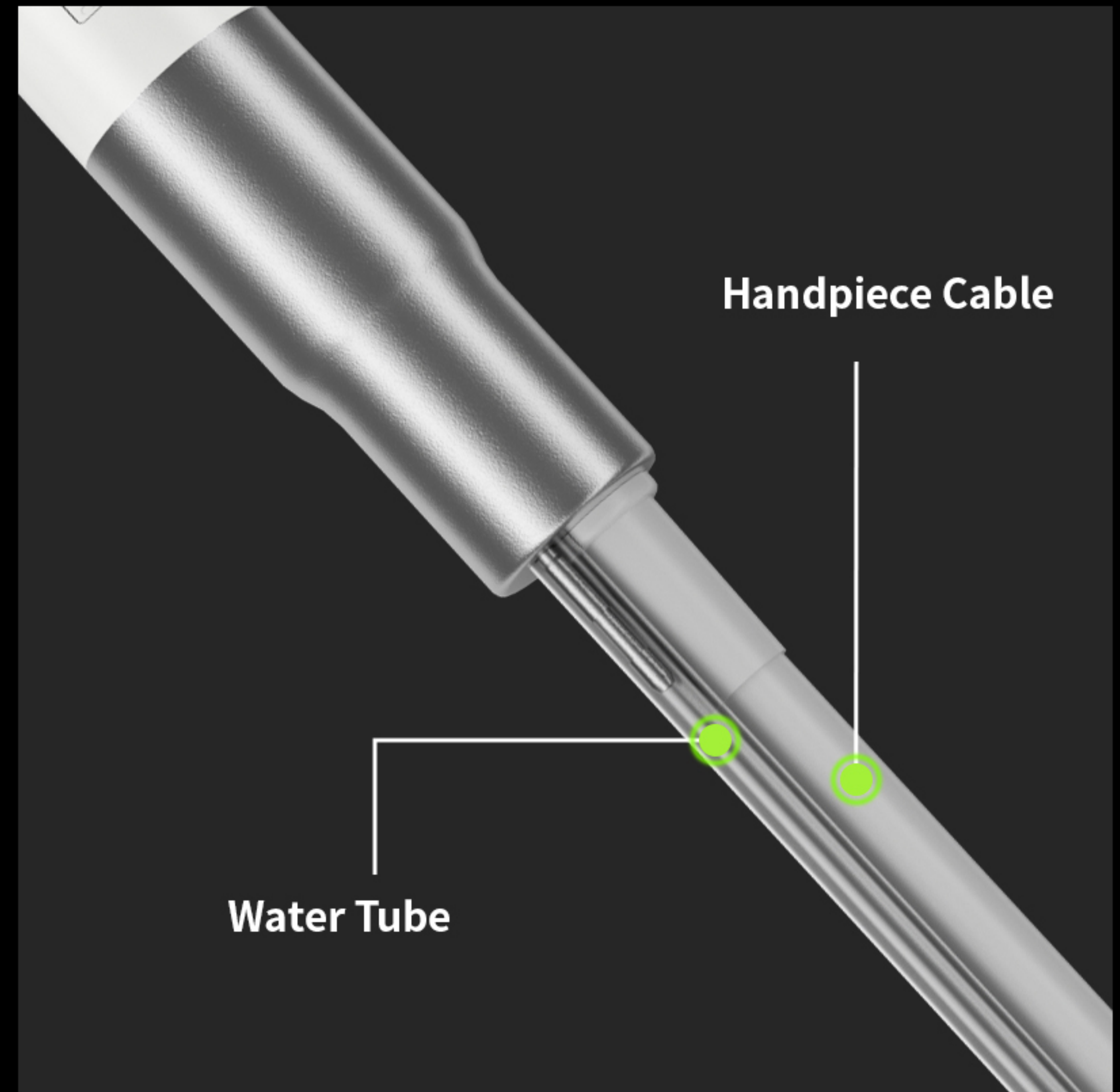
## Independent Water Tube and Handpiece Cable:

Compatible with universal implant disposable infusion tubes, making maintenance easier and ensuring sterile operation.

### Sterile Saline Irrigation



Prevents heat generation at the working tip, avoiding thermal injury and promoting faster postoperative healing.





# Silent Motor with Stable Operation

Premium Silent Motor: Equipped with cascade frequency stabilization technology for quiet water delivery and quick response to start/stop actions, ensuring continuous and stable water supply.



**Flow Rate: 25–100 mL/min**



# New 7-Inch Color Touchscreen

User-Friendly Interface: Simple and intuitive, with quick and easy parameter adjustments.





# Multifunctional Foot Pedal for Flexible Control

Seamless Mode Switching:  
Allows adjustments to power and water flow for more flexible surgical operations.

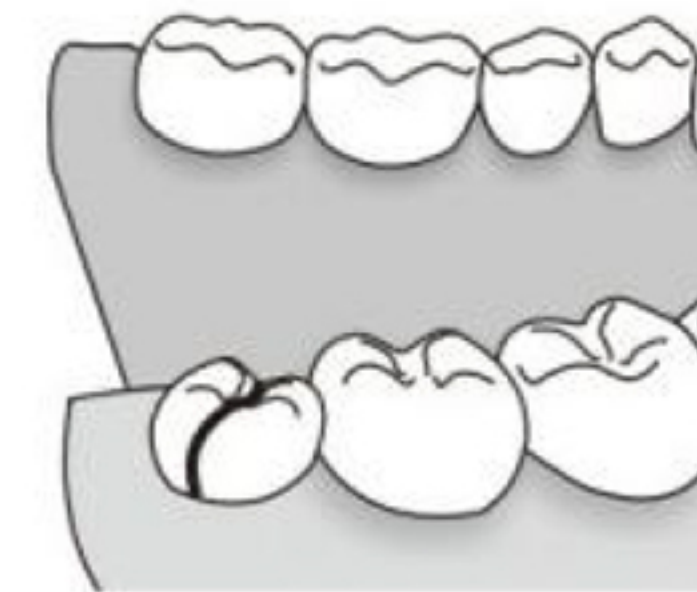
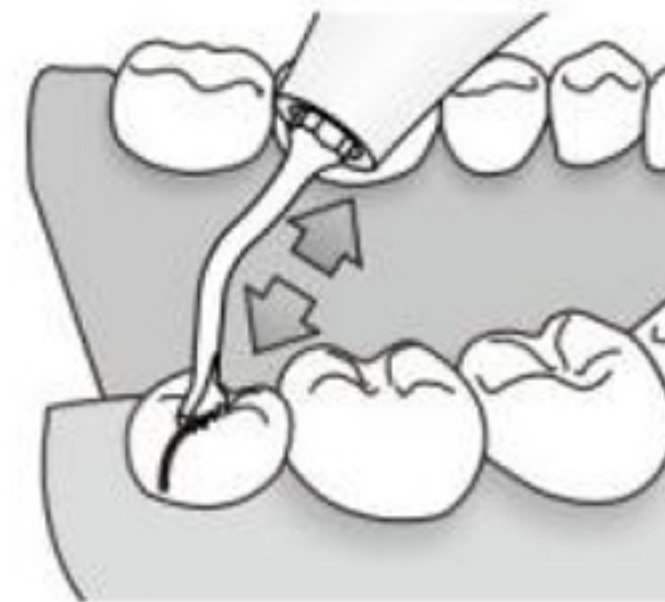
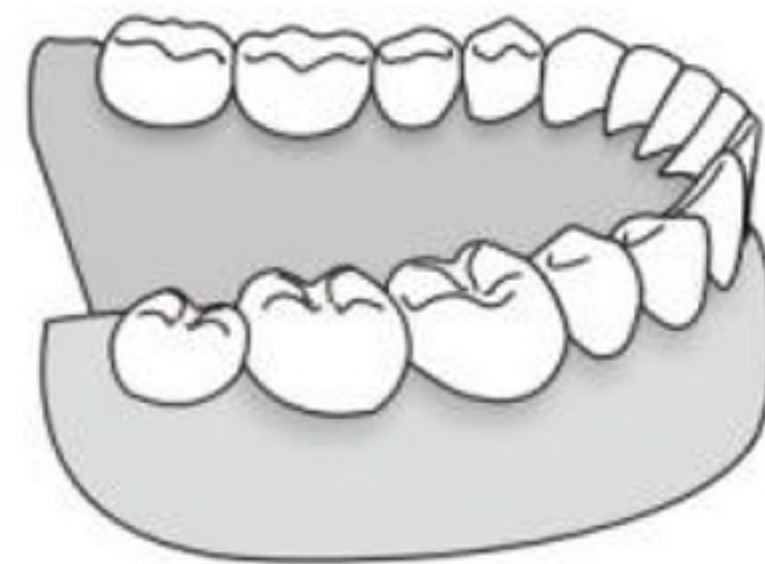
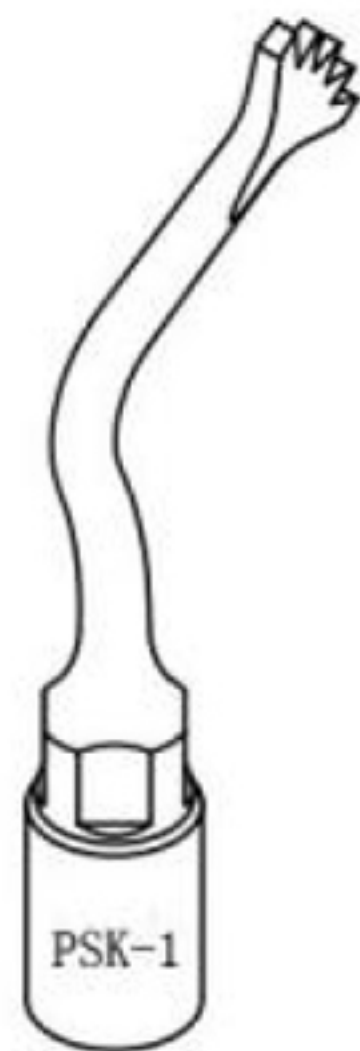




PSK-1(US1)

MODE: BONE

High effectiveness osteotomy of large bone sections during maxillofacial surgery, it can also be used for exodontia exodontics.

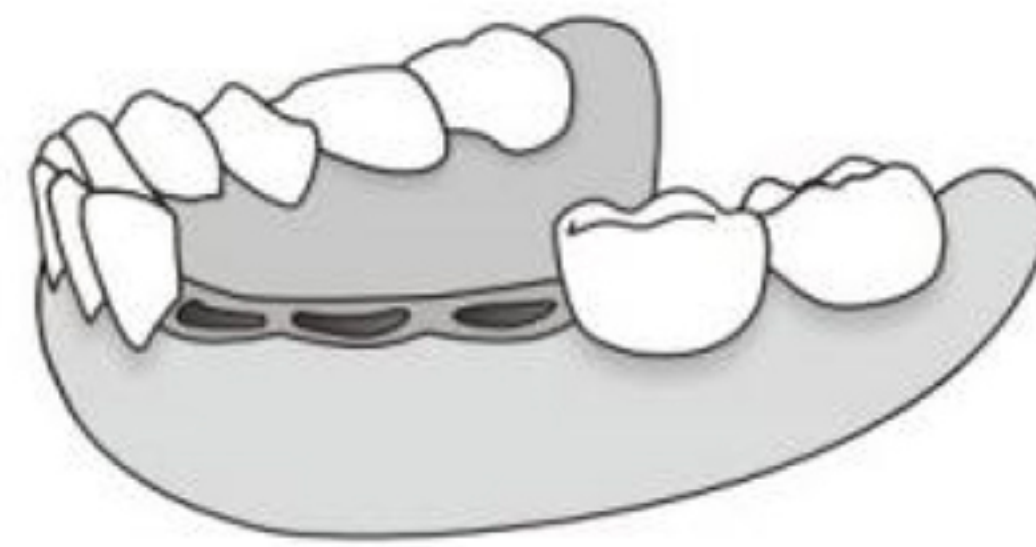
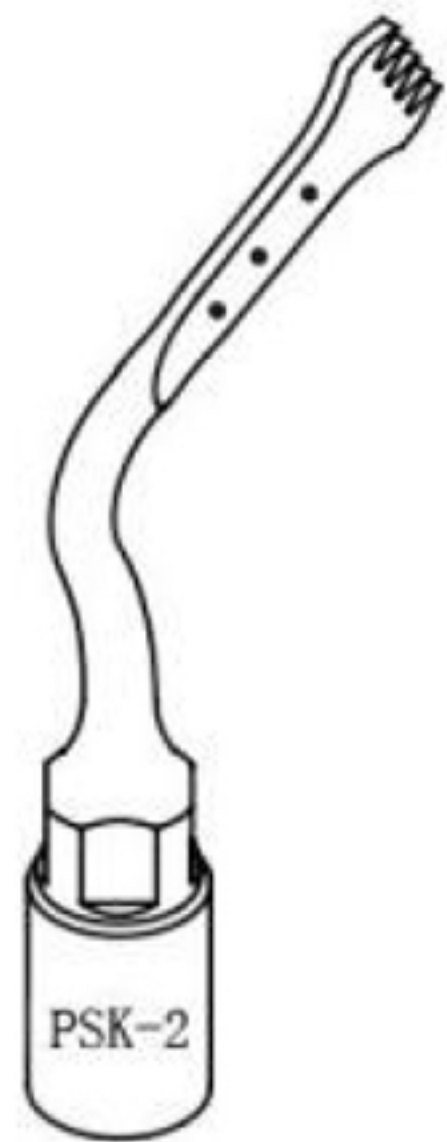




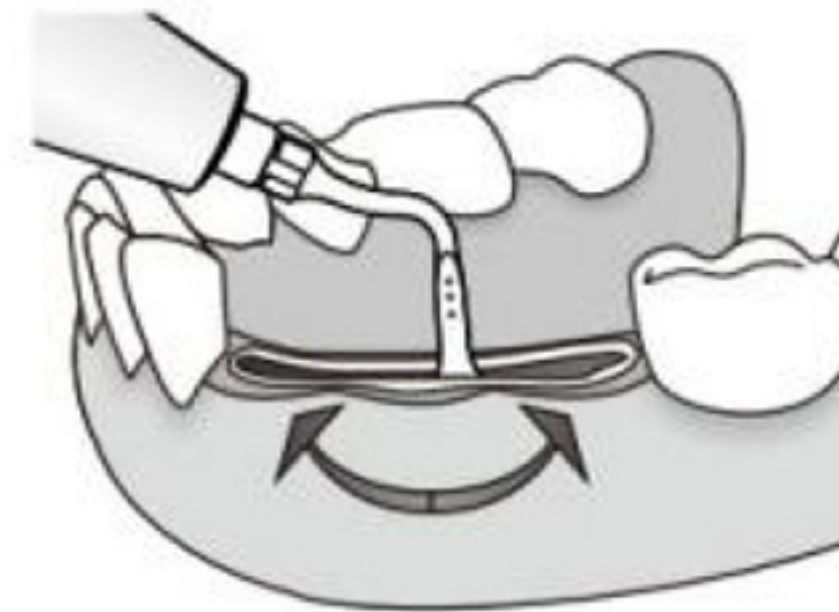
PSK-2(US2)

MODE: BONE

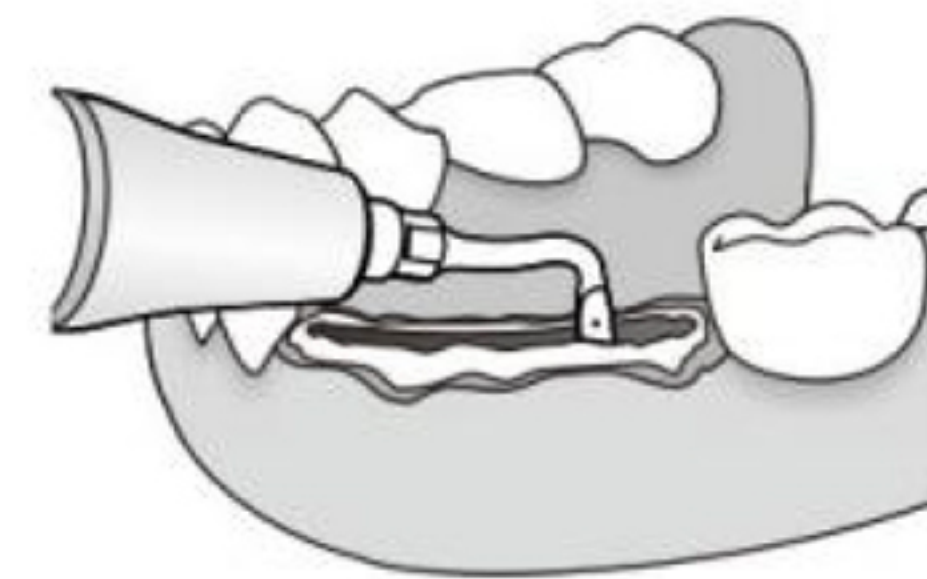
High effectiveness osteotomy technique in maxilla and mandible(ridge expansion, corticotomy technique, bone block grafting).



1



2



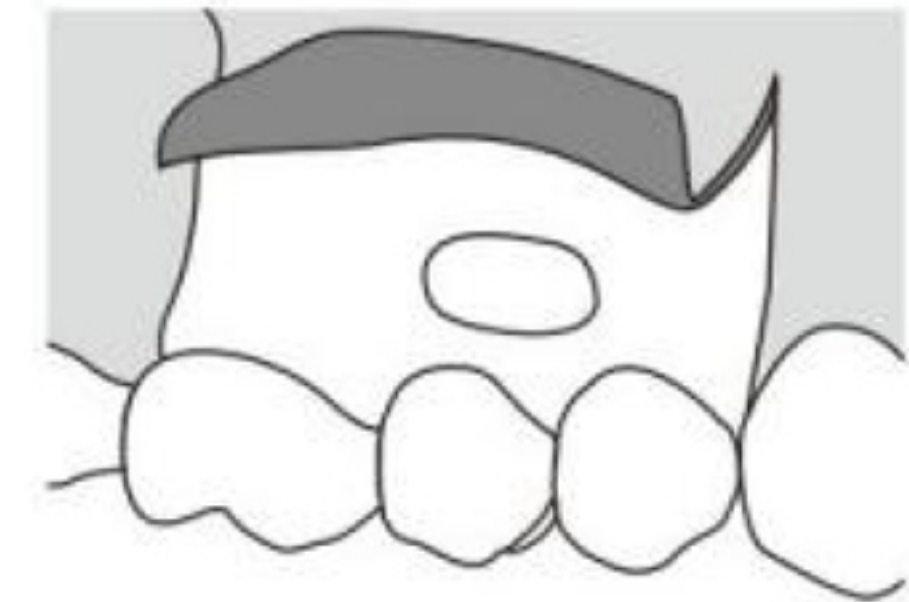
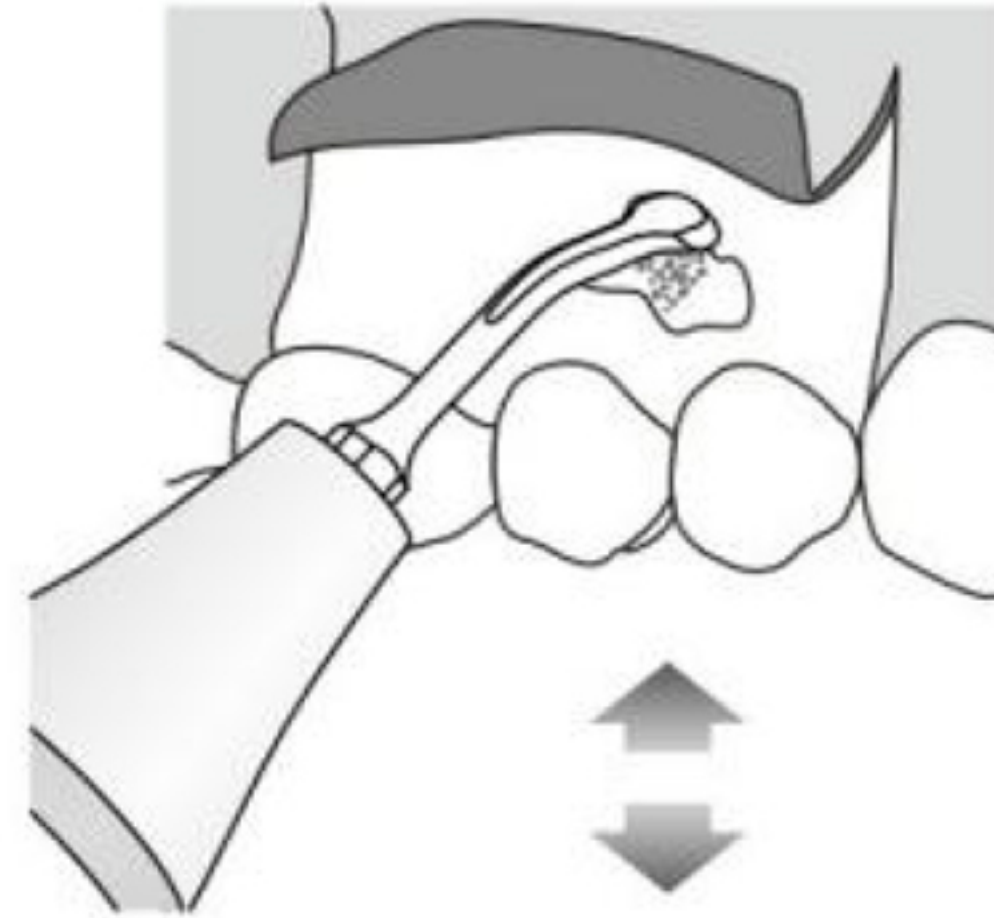
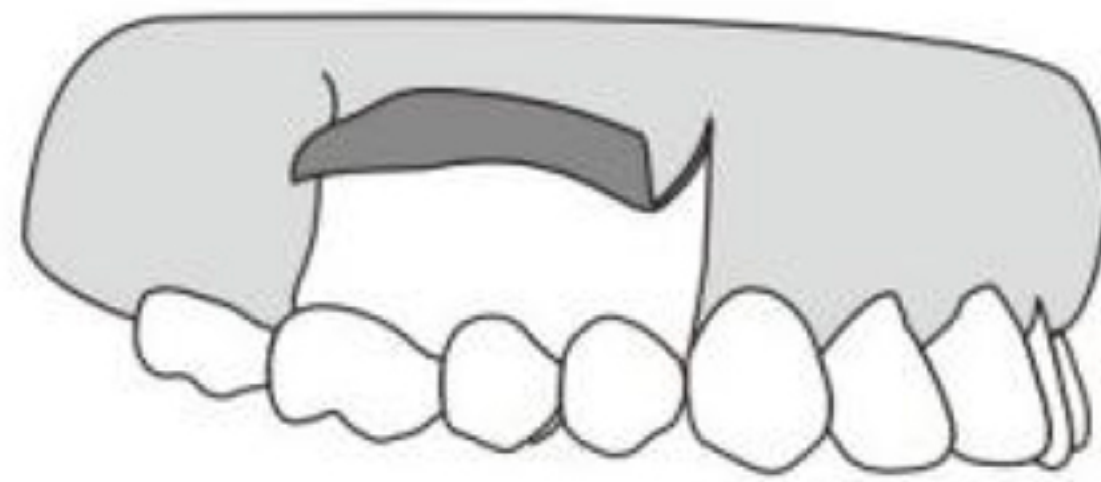
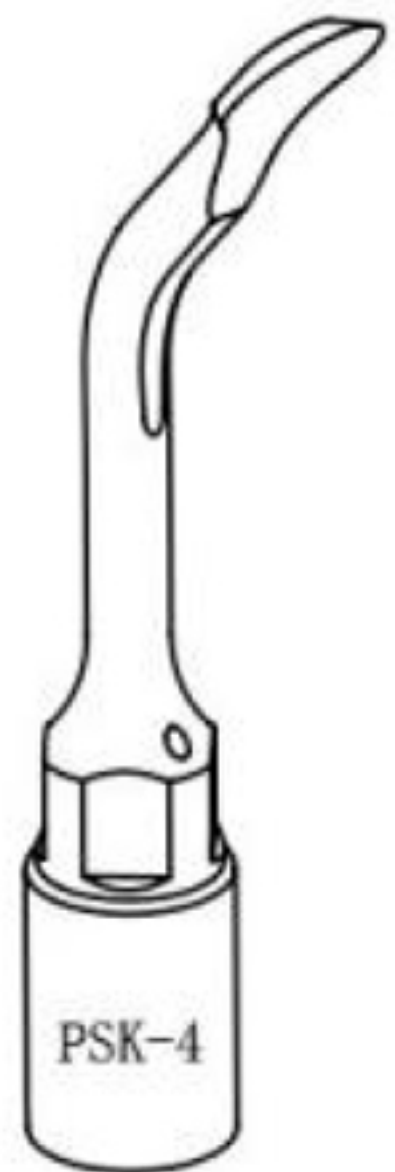
3



PSK-4(US4)

MODE: BONE

Universal osteoplasty: periodontal ostectomy, bone chips harvesting, inflammatory tissue removal (cyst, etc.).



1

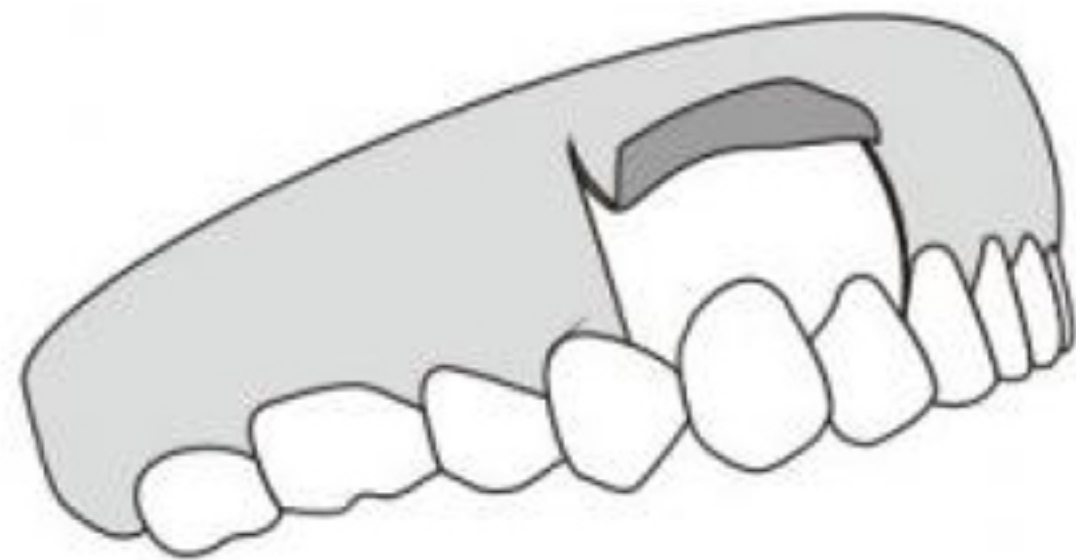
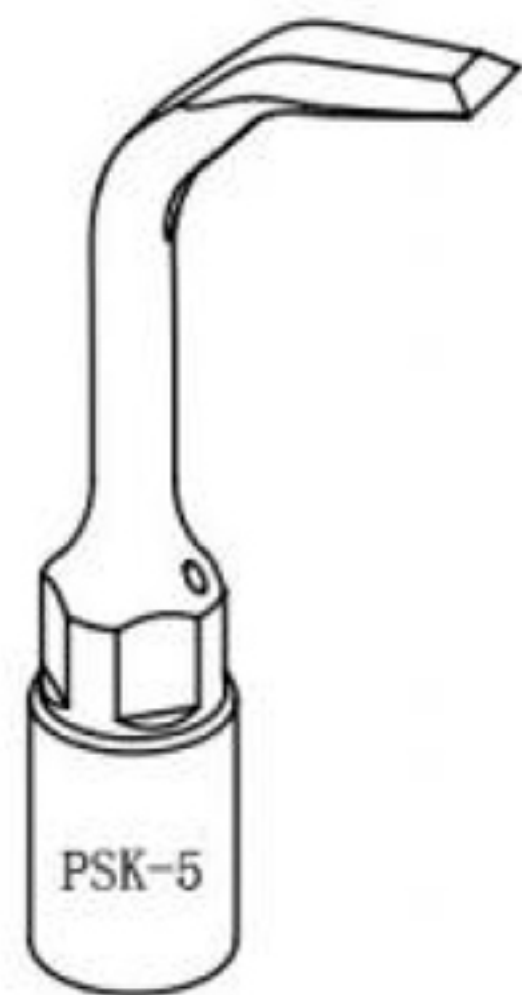
2



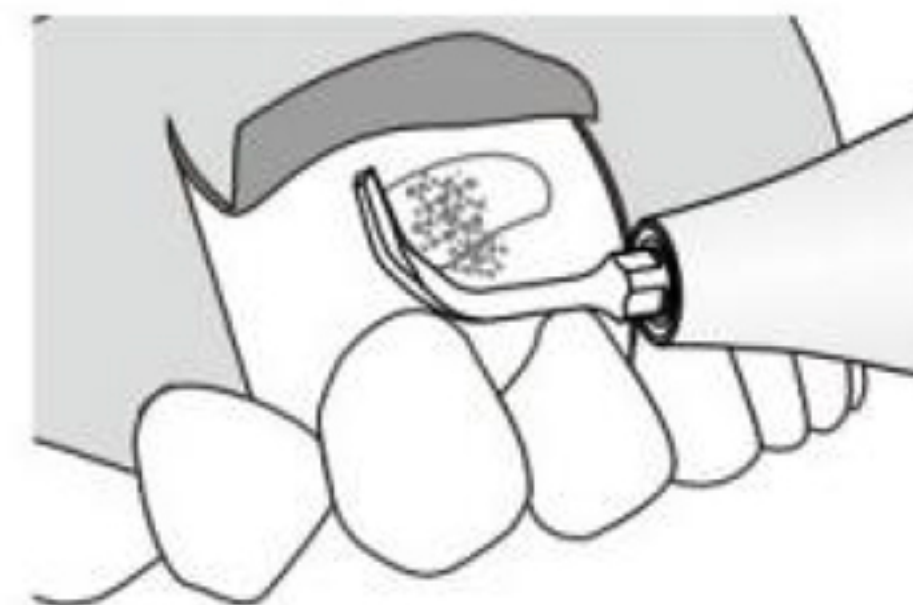
PSK-5(US5)

MODE: BONE

High efficiency bone osteoplasty: bone remodelling and harvesting of bone chips



1



2



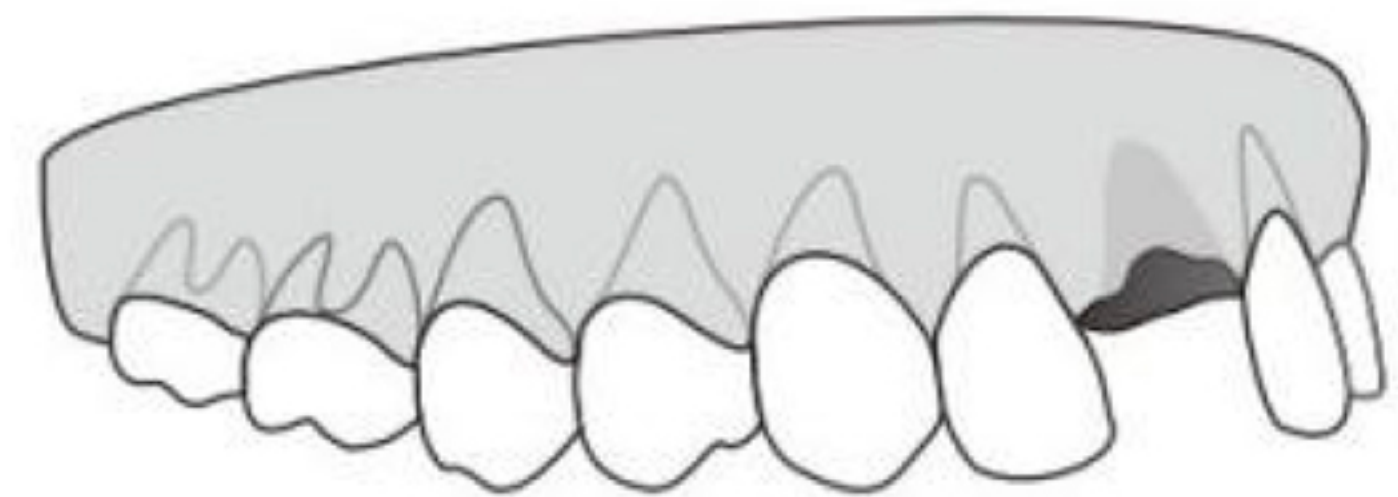
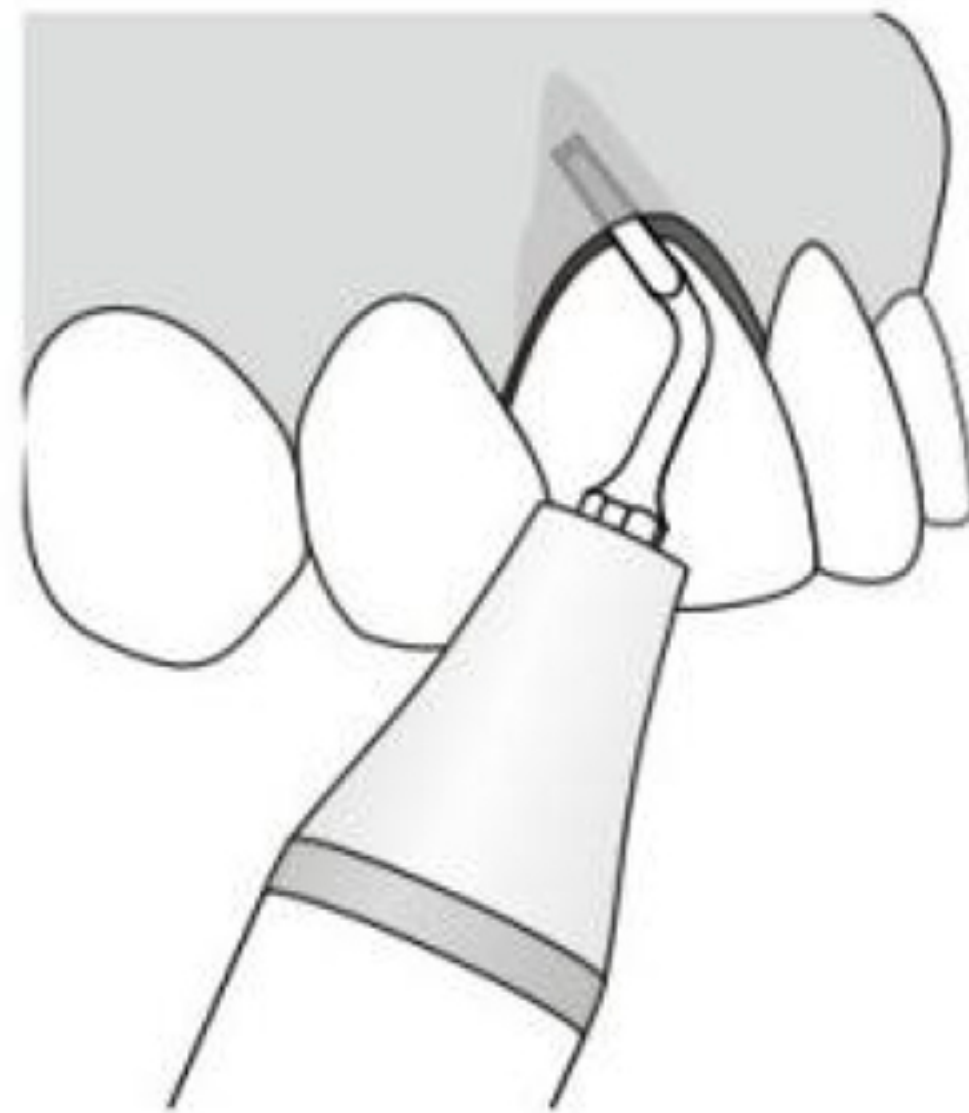
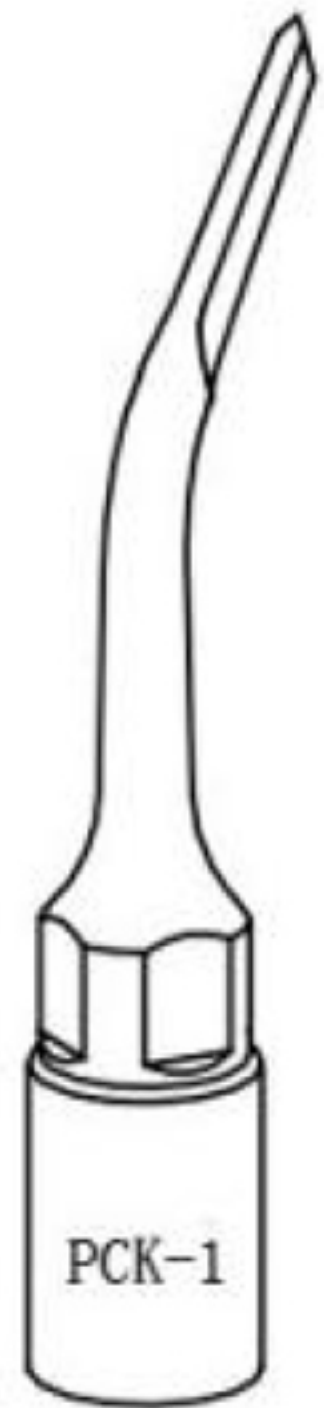
3



**PCK-1(UC1)**

**MODE: BONE**

Used to cut off the ankylosis and root fraction techniques.

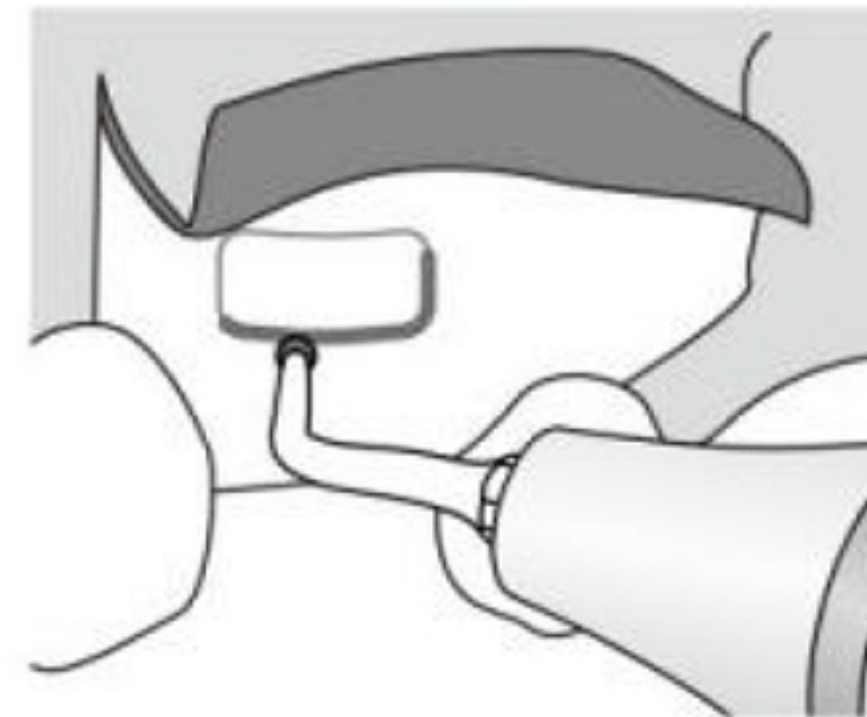
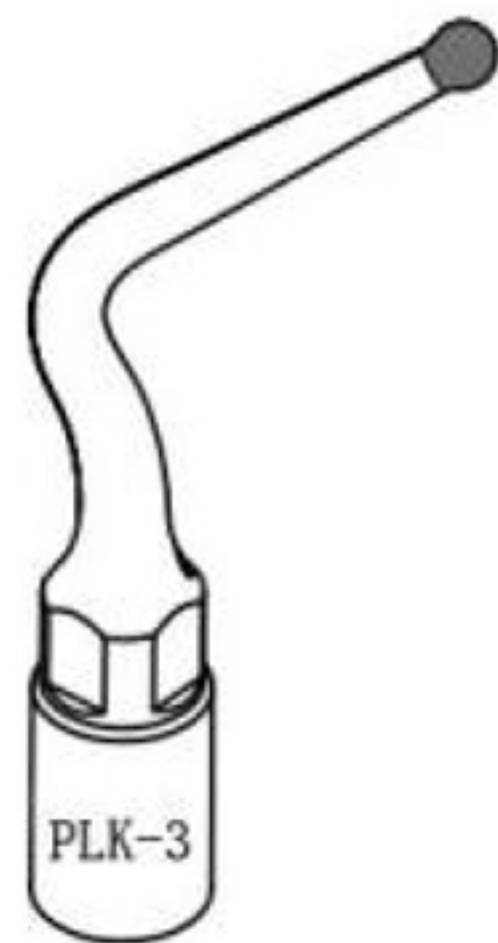




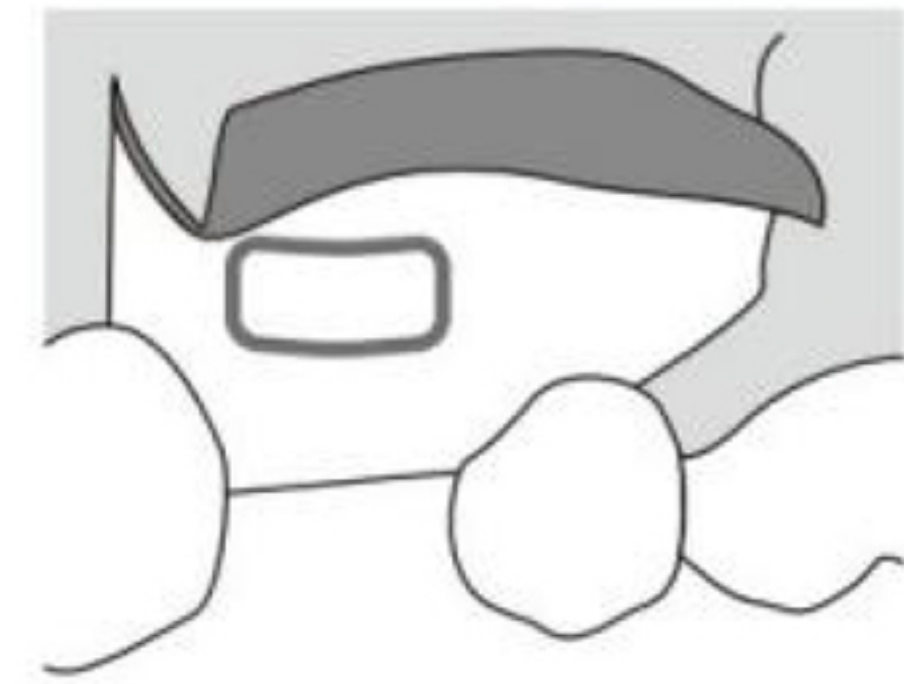
**PLK-3(UL3)**

**MODE: BONE**

Diamond-coated(100 $\mu$ m) instrument for micrometric osteotomy or osteoplasty: non-traumatic, to finalize the osteotomy or osteoplasty on thin bone and/or near delicate anatomic structures.



1



2